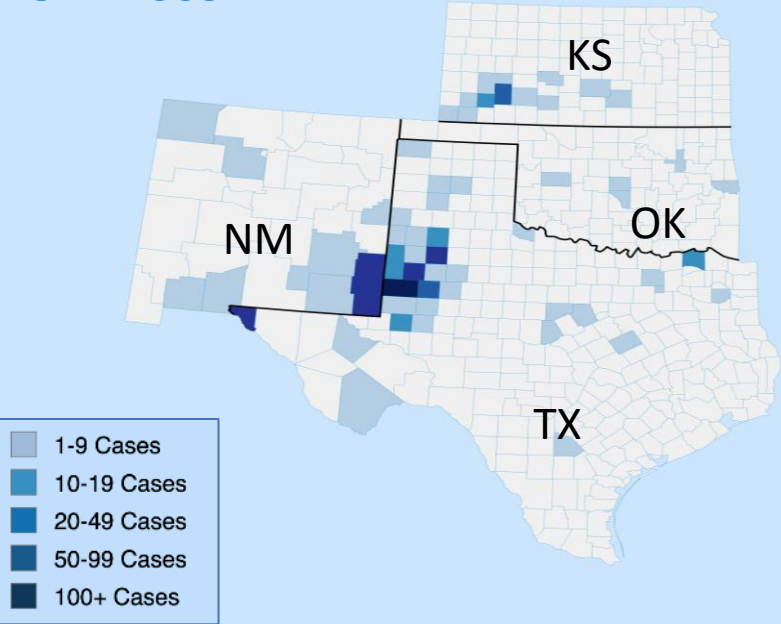


YALE SCHOOL OF PUBLIC HEALTH - ESF-8 VIRTUAL MEDICAL OPERATION CENTER SPECIAL REPORT




# MEASLES OUTBREAK - SOUTHWEST U.S. - 2025

TOTAL: 935



Created with mapchart.net

## MORBIDITY AND MORTALITY

STATE	CASES 	HOSPITALIZATIONS 	DEATHS 
TX	752 (+2)	97 (+1)	2
NM	86 (+5)	7	1
OK	20	0	0
KS	77 (+1)	3	0
TOTAL	935 (+8)	107 (+1)	3

## BACKGROUND

## TIMELINE

## CURRENT SITUATION

## EPI CURVE / CASES OVER TIME

## EPI SUMMARY

## US OUTLOOK

## MEXICO

## CANADA

## CONTRIBUTORS

6/30/2025  
0800 HRS EDT

## RISK ASSESSMENT IN OUTBREAK AREAS

Risk for Localized Spread	Risk to unvaccinated populations in and around the outbreak areas	Risk to Children	Potential for sustained transmission
HIGH	HIGH	HGH	HIGH

## LINKS

### TEXAS LINKS

- [TEXAS DEPARTMENT OF STATE HEALTH SERVICES](#)

### FACEBOOK | X

- [HEALTH ALERTS](#)
- [THE SOUTH PLAINS PUBLIC HEALTH DISTRICT](#)

### NEW MEXICO LINKS

- [NEW MEXICO DEPARTMENT OF HEALTH](#)

### OKLAHOMA LINKS

- [OKLAHOMA STATE DEPARTMENT OF HEALTH](#)

### KANSAS

- [KANSAS DEPARTMENT OF HEALTH AND ENVIRONMENT](#)

### RESOURCES FOR HEALTHCARE PROVIDERS

- [CDC – MEASLES FOR THE HEALTHCARE PROFESSIONALS](#)
- [CDC VIDEO: MEASLES CLINICAL FEATURES AND DIAGNOSIS](#)
- [CDC CLINICAL IMAGES OF MEASLES](#)
- [CDC LABORATORY TESTING FOR MEASLES](#)
- [CDC ROUTINE VACCINATION RECOMMENDATIONS](#)
- [CDC ISOLATION RECOMMENDATIONS](#)
- [CDC: MEASLES CONTROL IN HEALTHCARE SETTINGS](#)
- [CDC ALERT SIGN INFOGRAPHIC](#)
- [CDC POSTER FOR OFFICE DISPLAY](#)
- [NY HEALTH: RECOGNIZING MEASLES FACT SHEET](#)
- [NY HEALTH: DEALING WITH VACCINE HESITANCY](#)
- [MEASLES POST-EXPOSURE PROPHYLAXIS](#)
- [MEASLES REVIEW FOR PROVIDERS](#)

### MEASLES TESTING LABORATORIES

- [CDC MEASLES VIRUS LABORATORY](#)

### RESOURCES FOR THE PUBLIC

- [CDC – MEASLES](#)
- [MEASLES CASES AND OUTBREAKS](#)
- [NYSDOH: YOU CAN PREVENT MEASLES](#)
- [CDC VIDEO: GET VACCINATED AND PREVENT MEASLES](#)
- [CDC VACCINE SHOT FOR MEASLES](#)
- [DIRECTORY FOR LOCAL HEALTH DEPARTMENTS](#)

### RESOURCES FOR EMS PROVIDERS

- [GUIDANCE FOR SUSPECTED MEASLES PATIENT](#)
- [NYSDOH POLICY STATEMENT](#)

### PORTALS, BLOGS, AND RESOURCES

- [CIDRAP](#)
- [CORI](#)
- [FORCE OF INFECTION](#)
- [KAISER HEALTH NEWS](#)
- [MEDPAGE TODAY](#)
- [NY STATE GLOBAL HEALTH UPDATE](#)
- [THE PANDEMIC CENTER TRACKING REPORT](#)
- [YOUR LOCAL EPIDEMIOLOGIST](#)

Yale  
SCHOOL  
OF PUBLIC  
HEALTH

# BACKGROUND

## TYPE OF PUBLIC HEALTH EMERGENCY: **LARGE REGIONAL MEASLES OUTBREAK**

### OVERVIEW:

A measles outbreak originating in **West Texas** has spread in the US to **New Mexico, Oklahoma, and Kansas**, resulting in **107 hospitalizations** and **3 confirmed deaths** — including **two previously healthy children** in Texas and **one adult** in New Mexico. These are the **first U.S. measles deaths since 2015**, and the **first pediatric deaths since 2003**. Genetic and epidemiological evidence suggest that this outbreak has also contributed to the current outbreak in Chihuahua, Mexico, indicating clear cross-border transmission.

### THE VIRUS:

[Measles](#) is a highly contagious viral disease transmitted primarily through **respiratory droplets** from coughing or sneezing. Symptoms include **high fever, cough, runny nose, conjunctivitis**, and a distinctive **red, blotchy rash**. The virus can remain **airborne or infectious on surfaces for up to two hours**, contributing to its rapid spread.

### VACCINATION & GLOBAL TRENDS

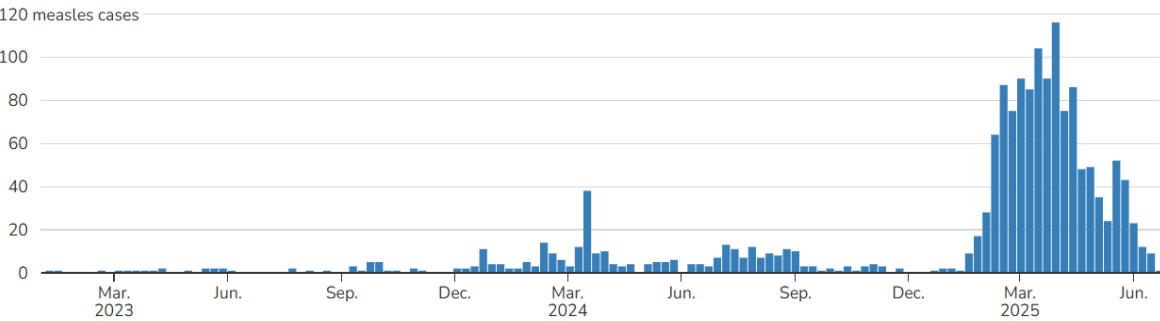
Despite being preventable through the [MMR](#) (measles, mumps, and rubella) vaccine, outbreaks continue to occur in under-vaccinated communities, leading to severe health outcomes and increased transmission risk ([CDC](#)). Over the past 20 years, vaccination rates have been declining globally, leading to a rise in certain regions, including the [United States, Canada, Mexico, South America](#), and [parts of Europe](#). In 2025, North and South America reported 11 times more cases than during the same period in 2024. In Europe, measles rates are at their highest point in 25 years.

*If current vaccination trends persist, the risk of measles becoming endemic once more, with recurrent outbreaks, is inevitable.*

**CONCERNS:** With the summer travel kicking off—peaking between now and Labor Day—we can expect domestic and international movement to fuel additional measles importations and spread in the United States. Measles is not inherently seasonal, but transmission often surges during periods of high travel, such as summer vacations, when unvaccinated or under-immunized individuals mix in crowded settings.

## MEASLES CASES IN 2025 - CDC

### 1227 (+13) CONFIRMED MEASLES CASES (AS OF 6/25/2025)



As of June 25, 2025, a total of 1,227 confirmed\* measles cases were reported by 37 jurisdictions: Alaska, Arkansas, Arizona, California, Colorado, Florida, Georgia, Hawaii, Illinois, Indiana, Iowa, Kansas, Kentucky, Louisiana, Maryland, Michigan, Minnesota, Missouri, Montana, Nebraska, New Jersey, New Mexico, New York City, New York State, North Dakota, Ohio, Oklahoma, Oregon, Pennsylvania, Rhode Island, South Dakota, Tennessee, Texas, Utah, Vermont, Virginia, and Washington.

#### Age

Under 5 years: 355 (29%)  
5-19 years: 455 (37%)  
20+ years: 404 (33%)  
Age unknown: 13 (1%)

#### Vaccination Status

Unvaccinated or Unknown: 95%  
One MMR dose: 2%  
Two MMR doses: 3%

#### Percent Hospitalized: 12%

##### Percent of Age Group Hospitalized:

Under 5 years: 20% (72 of 355)  
5-19 years: 8% (35 of 455)  
20+ years: 10% (40 of 404)  
Age unknown: 8% (1 of 13)

#### Deaths: 3

There have been 3 confirmed deaths from measles.

# TIMELINE (JANUARY – JUNE 2025)

## JANUARY 2025 INDEX CASES IDENTIFIED

1/29

South Plains Public Health District, TX reports a measles case in Gaines County.

## FEBRUARY 2025 OUTBREAK DECLARED & SPREADS

2/5/25

The Texas Department of State Health Services (DSHS) declares an outbreak. 6 cases are identified, all among unvaccinated school-aged children from Gaines County.

2/15

The New Mexico Department of Health(NMDOH) confirms an **outbreak** with 14 cases in Lea County.

2/26/25 (TX):

DSHS reports the death of a school-aged child who had been hospitalized in Lubbock.

2/28

DSHS reports 146 cases, 1 fatality, and 20 hospitalized.

NMDOH reports 20 cases.

## MARCH 2025 RAPID REGIONAL EXPANSION

3/1–3/15

DSHS reports 259 cases, 1 fatality, and 34 hospitalizations..

3/6 - NMDOH reports the death of a male adult

3/11- Oklahoma (OSDH) reports **two linked cases** to the Texas outbreak.

3/13 - First Kansas case genetically linked to TX.

3/16 - 5/31

DSHS reports 400 cases, 1 fatality, and 41 hospitalized individuals.

NMDOH reports 44 cases, 1 fatality, and 2 hospitalized

OSDH reports 9 cases.

KDHE reports 23 cases.

## APRIL 2025 PEAK OF TRANSMISSION

4/1 - 4/15

4/5 - DSHA reports the death of a second child.

DSHS reports 561 cases, 2 fatalities, and 58 hospitalizations..

NMDOH reports 63 cases, 1 fatality, and 5 hospitalizations.

OSDH reports 12 cases

KDHE reports 38 cases and 1 hospitalization

4/16 - 4/31

DSHS updates the outbreak to 663 cases, 2 fatalities, and 83 hospitalized individuals.

NMDOH reports 6 cases, 1 fatality, and 2 hospitalized

OSDH reports 16 cases.

KDHE reports 46 cases and 1 hospitalization.

## MAY – JUNE 2025 SLOWING BUT PERSISTENT

5/1- 5/15

DSHS reports 718, 2 fatalities, and 92 hospitalizations.

NMDOH reports 71 cases, 1 fatality, and 7 hospitalizations..

OSDH reports 17 cases.

KDHE reports 54 cases and 2 hospitalizations.

5/16 – 6/30

DSHS reports 752 cases, 2 fatalities, and 97 hospitalizations.

NMDOH reports 86 cases, 1 fatality, and 7 hospitalizations.

OSDH reports 20 cases.

KDHE reports 77 cases and 3 hospitalizations.

# CURRENT SITUATION

As of June 30th, 2025, the Southwestern outbreak has **935 cases**, including confirmed and pending cases across **Texas, New Mexico, Oklahoma**, and **Kansas**. The situation remains fluid, though we are seeing a **significant reduction in new cases in Texas**.

### CURRENT CASE COUNT: 935

- **Texas: 752 (+8)** (55% of cases are in Gaines County).
- **New Mexico: 86** (83% of cases are from Lea County).
- **Oklahoma: 20**
- **Kansas: 77 (+1)** (38.89% of the cases are from Gray County).

### HOSPITALIZATIONS: 107

- **Texas: 97 (+1)** – This accounts for 13% of all cases in Texas.
- **New Mexico: 7** – This accounts for 9.47% of all cases in New Mexico.
- **Kansas: 3** – This accounts for 5.08% of all cases in the state of Kansas.

### DEATHS: 3

- **Texas: 2** – This is 0.27% of all cases in Texas.
- **New Mexico: 1** – This is 1.23% of all cases in New Mexico.

### US NATIONAL CASE COUNT: 1,244 (AS OF 6/30/2025)

### INTERNATIONAL SPREAD

- **Mexico: 2,939 (+431), 9 fatalities**
  - **Chihuahua, Mexico: 2,752 (+417)** cases, 8 fatalities, 6 currently hospitalized.
- **Canada: 3,623 (+170), 1 fatality**
  - **Ontario Outbreak, Canada: 2,222 (+107)** cases, 149 hospitalizations, 1 fatality.
  - **Alberta, Canada: 1,122 (+243)** cases, 3 currently hospitalized.

### AGES OF CASES:

WEST TEXAS OUTBREAK				
0-4 Years	5-17 Years	18+ Years	Pending	Total
220 (29%)	284 (38%)	244 (32%)	4 (0.5%)	752
NEW MEXICO OUTBREAK				
0-4 Years	5-17 Years	18+ Years	Pending	Total
24 (30%)	20 (25%)	42 (46%)	0	86
KANSAS OUTBREAK				
0-4 Years	5-17 Years	18+ Years	Pending	Total
31 (39%)	34 (45%)	12 (16%)	0	77
OKLAHOMA OUTBREAK				
0-4 Years	5-17 Years	18+ Years	Pending	Total
17 Cases Confirmed, 3 Probable – no ages provided			3	20

### VACCINATIO STATUS

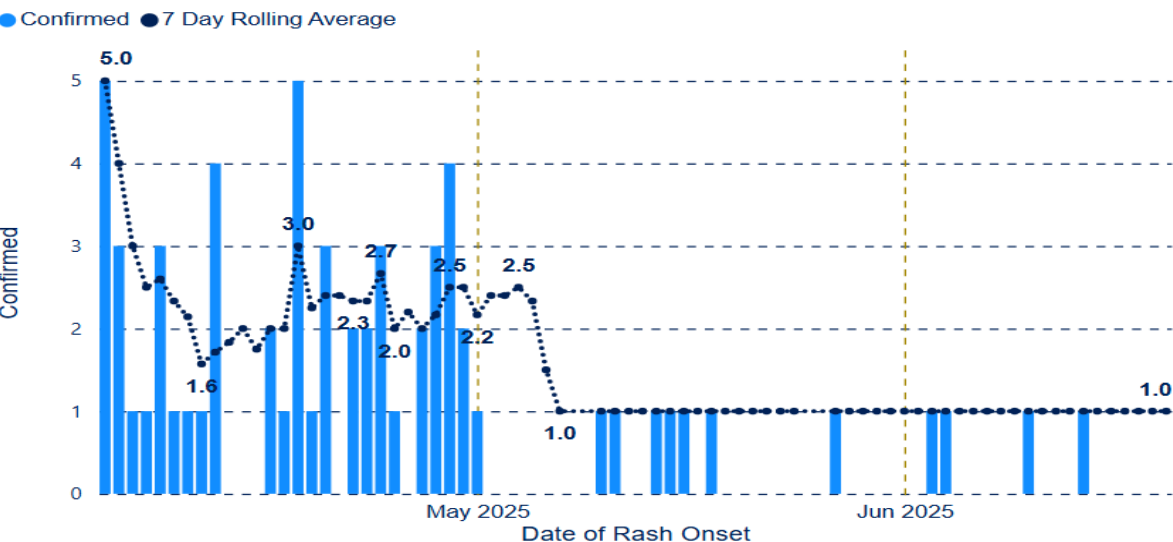
STATE	VACCINATED WITH 1 DOSE	VACCINATED WITH 2 DOSES	UNVACCINATED/ UNKNOWN		TOTAL CASES
TX	21	22	709*		752*
NM	14	52	20		86
OK	0	1	19		20
STATE	AGE APPROPRIATELY VACCINATED	NOT AGE APPROPRIATELY VACCINATED	NOT VACCINATED	PENDING VERIFICATION/UNABLE TO VERIFY	TOTAL CASES
KS	5	1	67	4	77

## CURRENT SITUATION: EL PASO

Confirmed Cases by Age			
Age	Cases	Hospitalizations	Deaths
0-4	17	2	0
5-17	4	0	0
18+	42	3	0
TOTAL	63	5	0

VACCINATION STATUS	
STATUS	NUMBER
UNVACCINATED	22
UNKNOWN	26
1 DOSE	8
2 DOSES	7
TOTAL	63

CASES BY GENDER	
GENDER	CASES
MALE	29
FEMALE	34
TOTAL	63



**SOURCES:** DSHS,, EL PASO MEASLES OUTBREAK DASHBOARD

- With a population of approximately 679,000, El Paso recorded its first five confirmed measles cases on April 4, 2025. By June 30, 2025, the City of El Paso Department of Public Health had reported 63 confirmed cases in the region: 42 among adults ( $\geq 18$  years) and 21 among young children ( $< 4$  years).
- **Initial Importations and Spread:** The outbreak's early cases were linked to importations from Gaines County, Texas, and to cross-border travel to Chihuahua, Mexico. El Paso's position as a border city, with heavy binational traffic, facilitated multiple introductions of the measles virus into urban public spaces (e.g., malls, restaurants, schools). Genetic sequencing confirmed the D8 genotype circulating among cases on both sides of the border.
- **Adult-Predominant Pattern:** Unlike most U.S. outbreaks, where young children typically comprise the majority of cases, El Paso saw a disproportionate burden among adults. Two factors likely contributed:
  1. **High Pediatric Coverage:** Kindergarten- and seventh-grade vaccination rates in El Paso County exceeded 96%, helping to shield children and delay widespread pediatric transmission.
  2. **Uncertainty Among Adults:** Many adults either never received two documented MMR doses or lacked any vaccination record, leading to clusters of susceptible adults in workplaces and community venues.

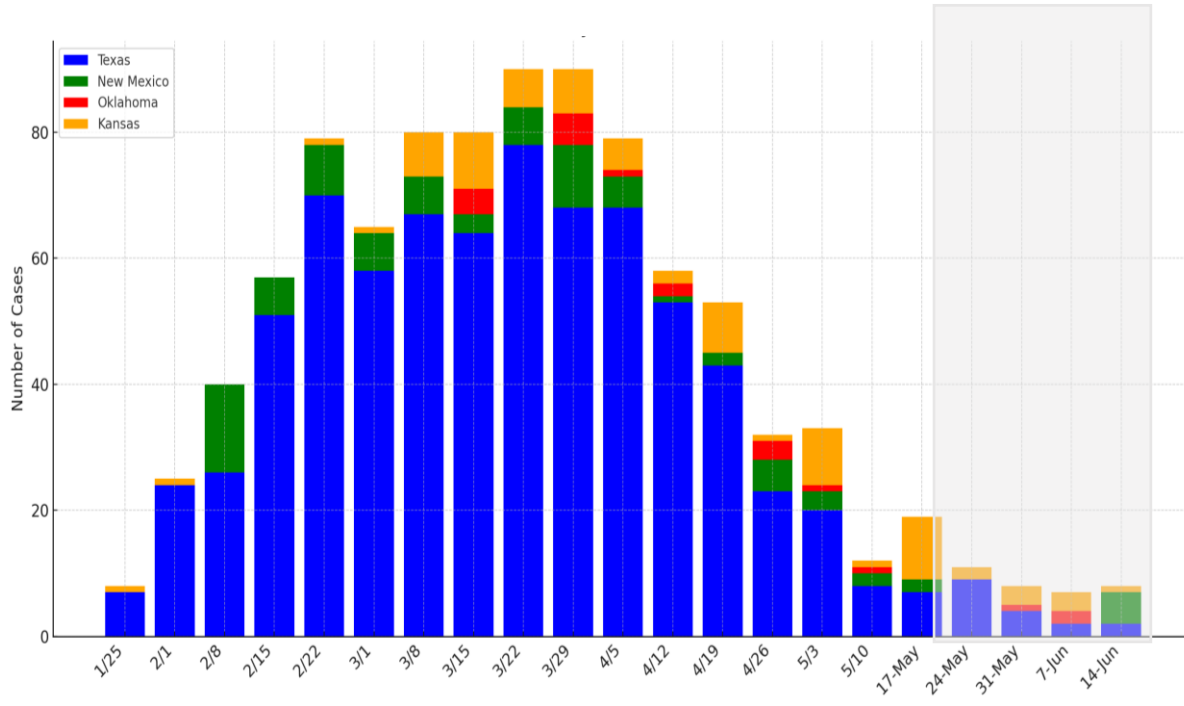
## Risk Factors and Challenges

- **Urban Density and Public Venues:** High-traffic locations served as focal points for exposure events, underscoring how urban environments accelerate transmission if pockets of susceptibility exist.
- **Misinformation and Access Barriers:** Language barriers, concerns among undocumented residents about seeking care, and lingering vaccine hesitancy— sometimes fueled by unproven alternative “remedies”— hampered early containment efforts. Public health messaging now stresses that the MMR vaccine is free, safe, and available regardless.



# EPI CURVE AND CASES OVER TIME

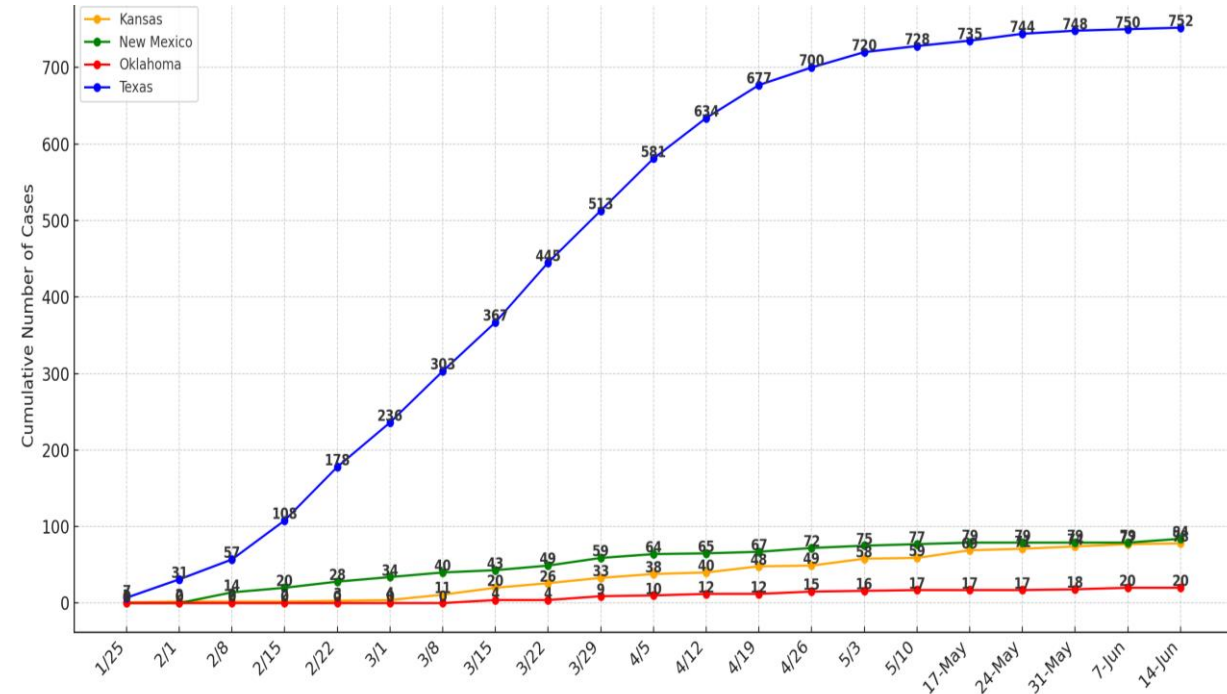
SOUTHWEST MEASLES OUTBREAK – EPI CURVE (WEEK ENDING 06/27/2025)



The number of new cases per week is declining in Texas and Oklahoma, while cases in New Mexico remain sporadic, and Kansas is experiencing a rise.

- **TX:** Reported first case the week of 1/25/25.
- **NM:** Reported first cases the week of 2/8/25.
- **OK:** Reported first cases the week of 3/15/25.
- **KS:** Reported first cases the week of 3/15/25.

CUMULATIVE CASES OVER TIME (WEEK ENDING 6/27/2025)



Cases are stable or slowly rising.

- **TX:** A total of 752 cases across 35 counties.
- **NM:** A total of 86 cases across 6 counties.
- **OK:** A total of 20 cases have been reported.
- **KS:** A total of 77 cases across 9 counties.

# EPI SUMMARY - TEXAS

(n= 752) AS OF 6/29/2025

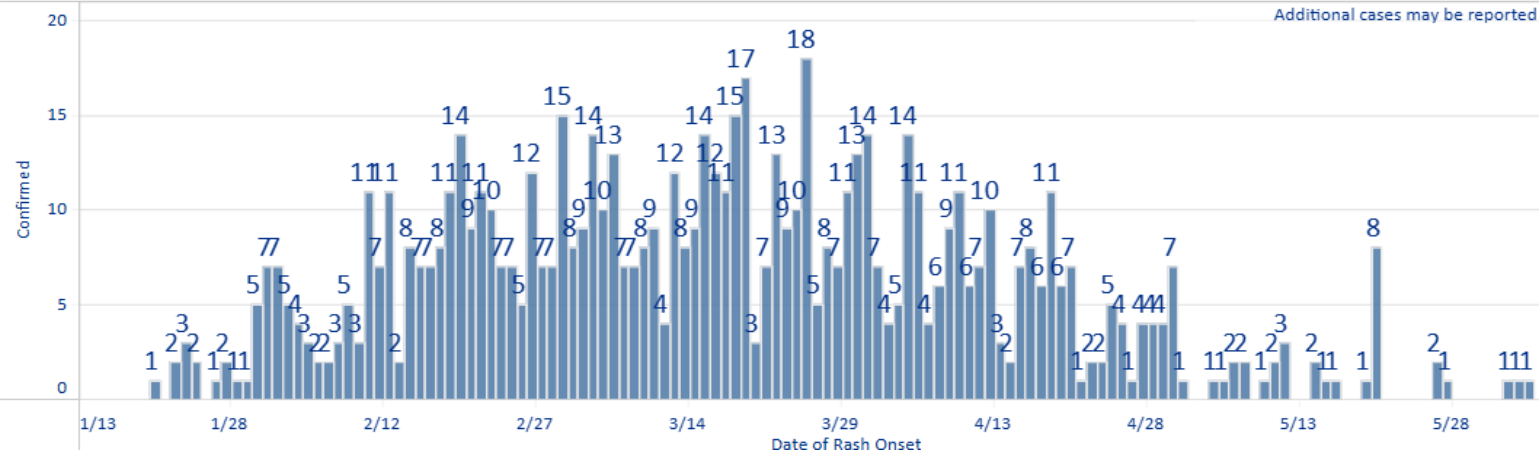
COUNTY	MEASLES CASES (NUMBER OF NEW CASES)	% of TOTAL CASES	% KINDERGARTENERS VACCINATED (2023-2024)	# OF SCHOOL DISTRICTS IN EACH COUNTY WITH MMR BELOW 95%
Andrews	3	0.42%	97.70%	0
Atascosa	1	0.14	98.51	0
Bailey	2	0.28%	98.94%	0
Borden	1	0.14%	94.44%	1
Brewster	1	0.14	94.74%	1
Brown	1	0.14%	93.64%	5
Carson	1	0.14%	91.67%	3
Cochran	14	1.97%	95.20%	1
Collins	1	0.14%	93.31%	16
Dallam	7	0.98%	95.30%	2
Dawson	26	3.65%	88.10%	4
Eastland	2	0.28%	95.63	2
Ector	12	1.48%	91.30%	5
El Paso	61*	8.05%	96.37%	8
Erath	1	0.14%	93.94%	5
Gaines	413	56.49%	82.00%	3
Garza	2	0.28%	97.10%	0

COUNTY	MEASLES CASES (NUMBER OF NEW CASES)	% of TOTAL CASES	% KINDERGARTENERS VACCINATED (2023-2024)	# OF SCHOOL DISTRICTS IN EACH COUNTY WITH MMR RATES BELOW 95%
Hale	5	0.84%	98.30%	2
Harderman	1	0.14%	94.40%	3
Hockley	6	0.84%	94.40%	3
Lamar	23 (+2)	2.67%	96.84%	0
Lamb	1	0.14%	97.37%	1
Lubbock	53	7.16%	92.25%	8
Lynn	2	0.28%	92.16%	2
Martin	3	0.42%	96.59%	1
McLennan	9		96.53	6
Midland	6	0.42%	94.77%	4
Parmer	5	0.70%	95.04%	1
Potter	1	0.28%	96.32%	3
Randall	1	0.14%	93.95%	1
Reeves	2	0.14%	94.92%	1
Rockwell	1	0.14%	91.47	2
Terry	60	8.43%	95.52%	2
Upshur	5	0.70%	93.3	2
Yoakum	20	2.81%	92.50%	1

\* New cases added after TX published.

Additional cases may be reported

- SOURCES:
- [Measles Outbreak – 24June 2025 | Texas DSHS](#)
  - [Measles Outbreak El Paso 6 June 2025](#)
  - [2023-2024 School Vaccination Coverage Levels by District/Private School and County - Kindergarten \(XLS\)](#)



# EPI SUMMARY (KS, NM, OK)

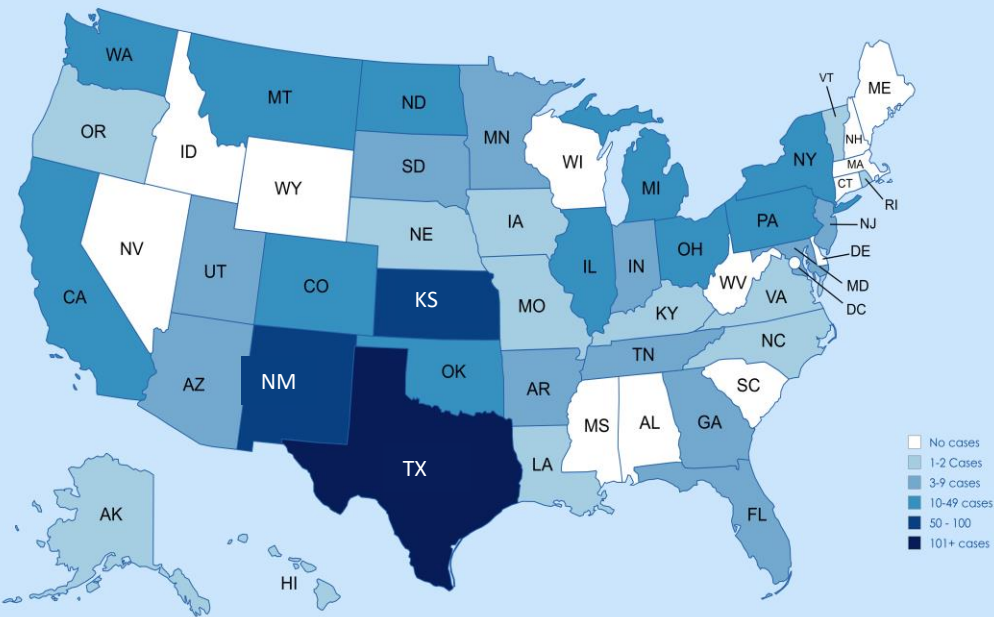
COUNTY	MEASLES CASES (NUMBER OF NEW CASES)	% of TOTAL CASES	% KINDERGARTENERS VACCINATED (2023-2024)
KANSAS (n=77) AS OF 6/27/2025			
<a href="#">Finney</a>	Between 1- 5		98%
<a href="#">Ford</a>	Between 1- 5		87%
<a href="#">Grant</a>	Between 1- 5		99%
<a href="#">Gray</a>	26	40.68%	66%
<a href="#">Haskell</a>	17(+2)	16.95%	58%
<a href="#">Kiowa</a>	6	10.17%	92%
<a href="#">Morton</a>	Between 1- 5		82%
<a href="#">Pawnee</a>	7	1.01%	
<a href="#">Stevens</a>	7	11.86%	83%
Kansas has reported 3 additional cases NOT associated with the outbreak in Reno and Sedgwick Counties.			
NEW MEXICO (n=86) AS OF 6/27/2025			
Chaves	1	1.27%	98%
Curry	1	1.27%	95%
Doña Ana	2	2.53%	95%
Eddy	3	3.8%	93%
Lea	66	83.54%	94%
Luna County	5		
Sandoval	6	7.59	94
Note: Those 18 years or younger have a 95% vaccination rate. According to local health officials, 63% of adults have received one shot of MMR, and only 55% have received both shots. However, they noted that there may be vaccinated adults whose records have not been added to the system. Adults make up more than half of the reported cases in New Mexico.			
OKLAHOMA (n=20) AS OF 6/27/2025			
Tulsa and Cherokee Nation	20	Insufficient Information	89.5%



# US OUTLOOK

*\* NOTE: The information on this page has been gathered by reviewing data from state and local health departments, news media sources, and the [Center for Outbreak Response Innovation \(CORI\)](#)*

1,244\*



The increase in measles cases can be attributed to falling vaccination rates and increased importation of travel-related cases, which occur when unvaccinated people acquire measles abroad and bring it back to the U.S.

STATE	CASES
TEXAS **	784
NEW MEXICO	86
KANSAS	80
OHIO	35
NORTH DAKOTA	34
MONTANA	23
OKLAHOMA	20
CALIFORNIA	17
COLORADO	16
MICHIGAN	16
PENNSYLVANIA	15
NEW YORK	13
ILLINOIS	10
WASHINGTON	10
ARKANSAS	8
INDIANA	8
UTAH	7
GEORGIA	6
IOWA	6
KENTUCKY	6
TENNESSEE	6
MINNESOTA	5
ARIZONA	4
SOUTH DAKOTA	4
FLORIDA	3
MARYLAND	3
NEW JERSEY	3
VIRGINIA	3
ALASKA	2
HAWAII	2
LOUISIANA	2
MISSOURI	2
NEBRASKA	1
NORTH CAROLINA	1
OREGON	1
RHODE ISLAND	1
VERMONT	1
TOTAL	1,244

- OUTBREAKS
- SMALL OUTBREAK (3-9)
  - MEDIUM OUTBREAK (10 - 49)
  - LARGE OUTBREAK (50 OR MORE)

An outbreak of measles is defined as three or more laboratory-confirmed cases that are temporally related and epidemiologically or virologically linked.

As of 1800 hours on June 20, 2025, EDT, there are approximately 1,214 measles cases (including confirmed and suspected cases) across 35 states.

This year, there have been at least 23 measles outbreaks. Here are some listed below:

1. **Texas**, involving [35 counties](#)
2. **New Mexico**, [6 counties](#)
3. **Oklahoma**, and the [Cherokee Nation](#) in Oklahoma
4. [9 counties](#) in **Kansas**
5. **Ashtabula and Knox Counties, Ohio**
6. **Erie County, Pennsylvania**
7. **Allen County, Indiana**
8. **Bergen County, New Jersey**
9. **metro Atlanta, Georgia**
10. **Gallatin County, Montana**
11. **Montcalm County, Michigan** (linked to Ontario Outbreak)
12. **Upper Cumberland region, Tennessee**
13. **Williams County, Grand Rapids, North Dakota**
14. **Faulkner County, Arkansas**

**\*\* TEXAS CASES NOT ASSOCIATED WITH OUTBREAK: 34**

- 1 case – Bell County
- 1 case – Brazoria County
- 3 cases – Collin County
- 1 case – Dallas County
- 2 case – Denton County
- 2 cases – El Paso County
- 1 case – Adult, Fort Bend (travel-related)
- 3 cases – Harris County
- 1 case – Harrison County.
- 1 case – Hays County
- 2 case – Randall County
- 1 case – Adults, Rockwall County (travel-related)
- 1 Case – Scurry County
- 1 case – Shackelford
- 4 cases – Tarrant
- 2 case – Travis County
- 6 cases - Williamson

TEXAS CASES ASSOCIATED WITH THE OUTBREAK: 752

# US OUTLOOK: THINGS TO KEEP AN EYE ON

**KANSAS:** Five counties in Kansas remain active for measles. They are Ford, Gray, Haskell, Pawnee, and Morton counties. As of 6/29/2025, of the 80 measles cases reported statewide, 77 are associated with the southwest Kansas measles outbreak with three hospitalizations.

**KENTUCKY:** Four new cases of measles have been reported in Kentucky last week, including three in one household in Woodford County. The fourth case is in Todd County and is not related to the other three cases, the Cabinet for Health and Family Services said Friday. That person was exposed to someone with measles while traveling internationally. This brings Kentucky's total to 6 cases this year.

**MICHIGAN:** Health officials in Grand Traverse County say they are experiencing a "measles outbreak" after confirming the third case of the highly infectious disease this week. This is Michigan's 2<sup>nd</sup> outbreak.

**MONTANA:** 23 Cases and 2 hospitalizations are being reported in Montana with Gatlin County being hit the hardest with 15 cases and 2 hospitalizations of these cases 5 have occurred in June. Based on this the county want local health care providers to consider an accelerated MMR vaccination schedule for some of their patients.

**NEW MEXICO:** The New Mexico Department of Health says five inmates housed at Luna County Detention Center in Deming have tested positive for measles. The health department is providing personal protective equipment, test kits, and measles vaccines to the jail. The detention center houses around 400 people and employs 100 staff members.

**NORTH CAROLINA:** The North Carolina Department of Health and Human Services has confirmed the first case of measles this year in NC. A child visiting Forsyth and Guilford counties became ill while traveling to NC from another country where measles outbreaks have been reported.

**OREGON:** Oregon health officials have confirmed the state's first case of measles this year in an unvaccinated adult from Multnomah County who recently returned from a trip overseas. .

**UTAH:** There are now [seven reported cases](#) of measles across Utah, after health officials report two new cases on Friday. According to the Utah Department of Health and Human Services, the two new cases are in people who are unvaccinated. One of the new cases is linked to people who've already been diagnosed with measles, according to health officials..

**Tourism, business, and travel are expected to increase the number of imported measles cases this summer. In response, PAHO is emphasizing three key preventive measures:**

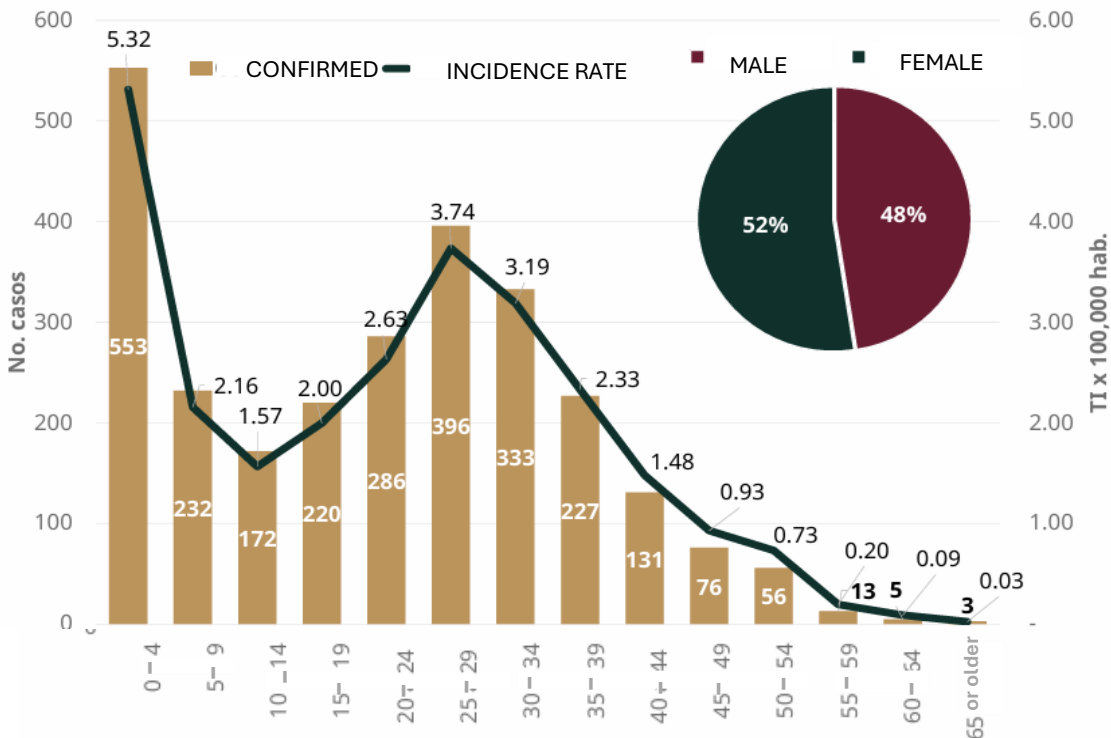
- 1. Achieve 95% vaccination coverage with two doses across all communities.** While national coverage rates may appear sufficient, pockets of low vaccination—often due to cultural or religious resistance—leave some populations vulnerable. Coverage must be uniform and equitable.
- 2. Rapidly identify imported cases..** Effective coordination between public and private healthcare providers is essential, as international travelers often seek care in the private sector.
- 3. Implement immediate containment measures.** Upon detection of a case, swift contact tracing and vaccination of unprotected individuals must begin without delay to prevent further spread.

# MEXICO OUTLOOK

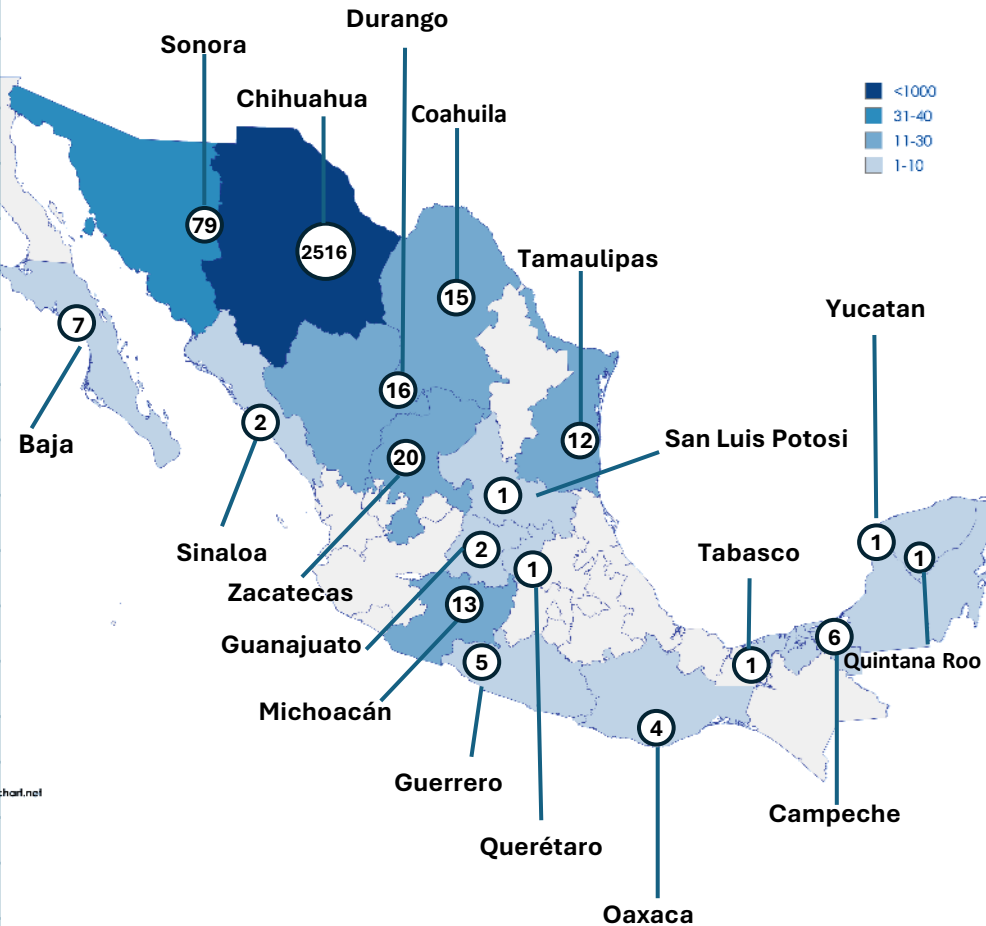
## OVERVIEW

Mexico is currently facing its largest measles outbreak in decades, centered in the Mennonite community of Cuauhtémoc, Chihuahua. Genetic and epidemiological investigations have linked the outbreak to an unvaccinated child who traveled from Seminole, Texas, to visit relatives in late January 2025, seeding sustained local transmission. To date, there have been five deaths associated with this outbreak– 1 case in Sonora and 4 cases in Chihuahua. Mexico’s health authorities estimate that the probable number of cases exceeds 5,000

## CONFIRMED MEASLES CASES BY SEX, AGE GROUP, AND INCIDENCE RATE

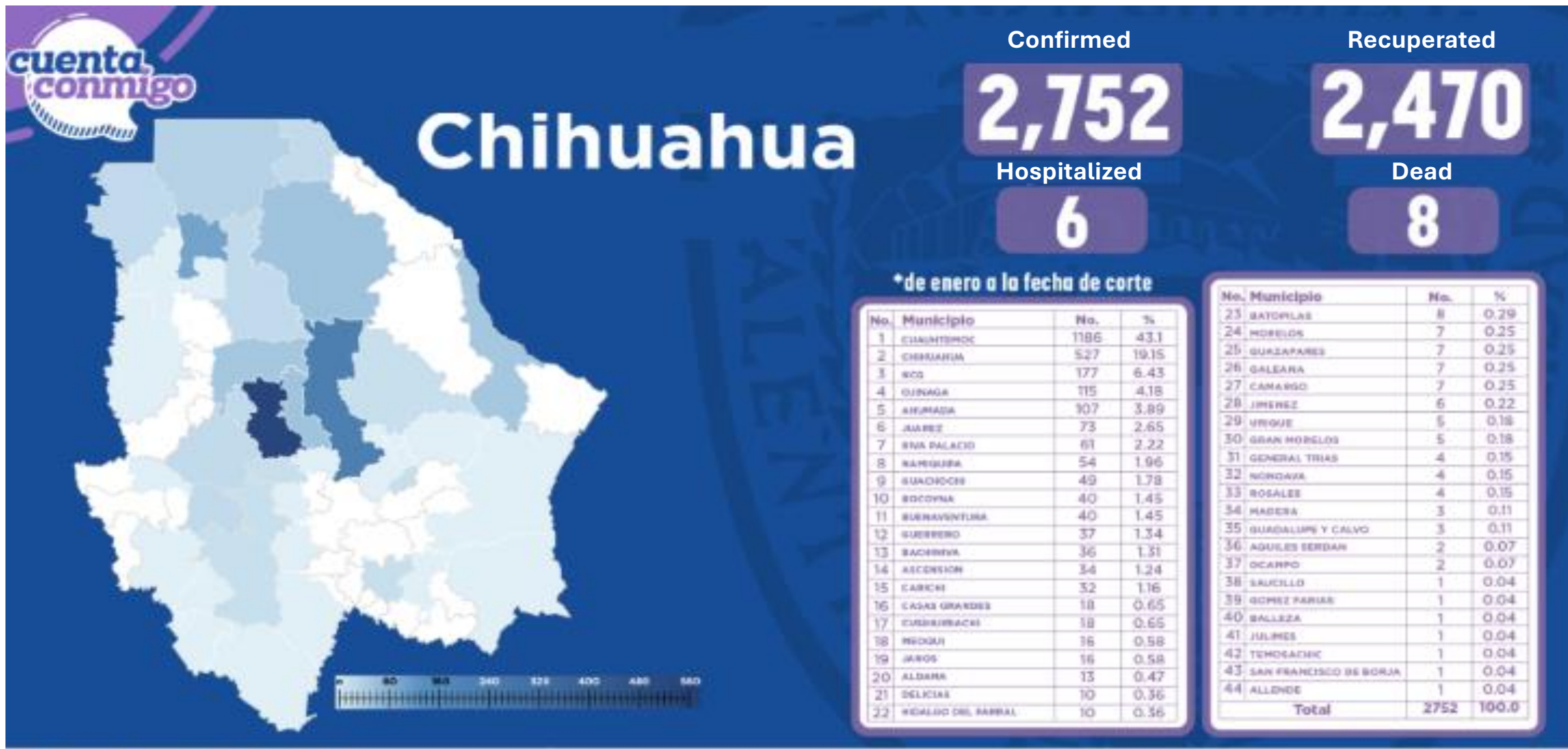


Confirmed Measles	
State	Cases
Baja California Sur	7 (+4)
Campeche	6
Chihuahua	2752 (+417)
Coahuila	15 (+2)
Durango	16 (+1)
Guanajuato	2
Guerrero	5
Michoacán	13
Oaxaca	4
Querétaro	1
Quintana Roo	2
San Luis Potosi	1
Sinaloa	2
Sonora	79 (+6)
Tabasco	1
Tamaulipas	12
Yucatan	1
Zacatecas	20 (+1)
TOTAL	2,939 (+431)



CASES: 2,939  
DEATHS: 9 (+5)

# MEXICO: CHIHUAHUA



Fuente: Secretaría de Salud



GOBIERNO  
DEL ESTADO  
DE CHIHUAHUA

SECRETARÍA  
DE SALUD

MediChihuahua





# CANADA OUTLOOK

## Brief Timeline of Outbreak

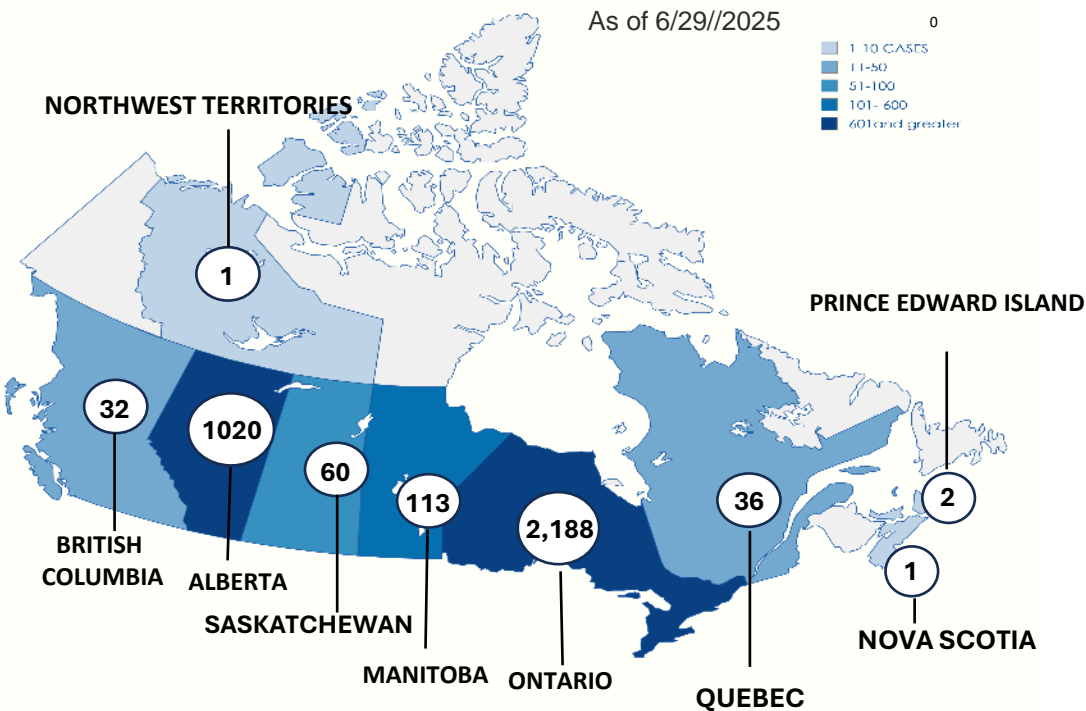


## CANADA OUTBREAK:

- An ongoing outbreak of measles in Ontario has been traced back to a large gathering in New Brunswick last fall that guests from Mennonite communities attended. On October 18, 2024, exposure to a travel-related case in New Brunswick led to measles cases in Ontario.
- Currently, five provinces are experiencing active outbreaks: **Ontario, Alberta, Manitoba, Saskatchewan, and British Columbia.**
- **An infant infected with measles has died** in southwestern Ontario, Canada, the province's chief medical officer of health said in a statement on Thursday, **6/5/2025**.
- Quebec declared its outbreak over on 4/22/2025 after no new cases in 32 days.

## MEASLES 2025




PROVINCE	CASES
ONTARIO	2,222 (+34)
ALBERTA	1,122 (+102)
MANITOBA	116 (+5)
BRITISH COLUMBIA	63 (+31)
SASKATCHEWAN	60
QUEBEC	36
PRINCE EDWARD ISLAND	2
NOVA SCOTIA	1
NORTHWEST TERRITORIES	1
TOTAL	3,623



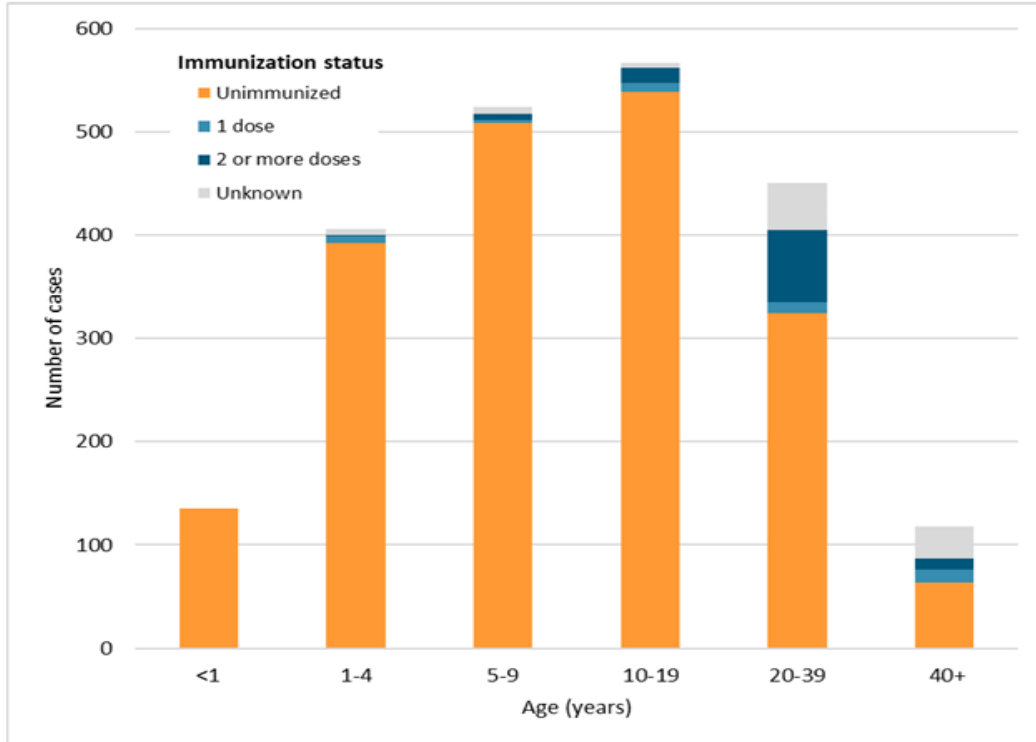
# CANADA OUTLOOK: ONTARIO's OUTBREAK

## (OCTOBER 18, 2024 TO JUNE 24, 2025)

### MORBIDITY AND MORTALITY

PROVINCE	CASES 	HOSPITALIZATIONS 	DEATHS 
ONTARIO*	2,212	149	1

### IMMUNIZATION STATUS OF MEASLES OUTBREAK CASES BY AGE GROUP: OCTOBER 28, 2024 – JUNE 24, 2025

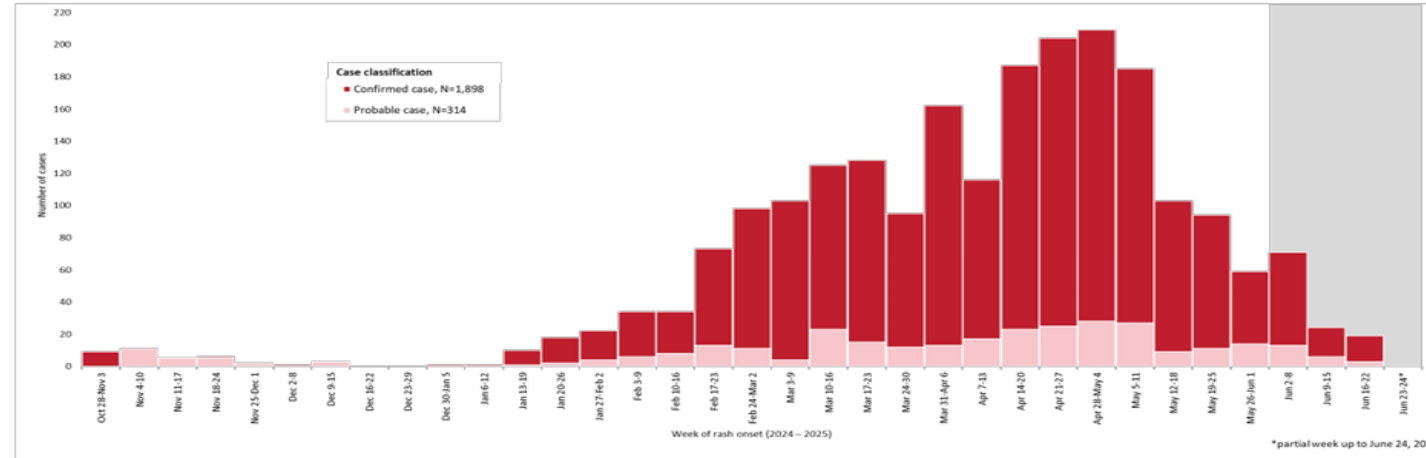


Age group	<1	1-4	5-9	10-19	20-39	40+
Unimmunized	100.0%	96.6%	97.1%	95.1%	72.0%	54.2%
1 dose	0.0%	1.7%	0.6%	1.4%	2.4%	10.2%
2 or more doses	0.0%	0.2%	1.0%	2.6%	15.6%	9.3%
Unknown	0.0%	1.5%	1.3%	0.9%	10.0%	26.3%

### Multi-Jurisdictional Outbreak

- Among all outbreak cases, the majority (73.8%, n=1,632) were infants, children and adolescents (19 years old or younger), while 25.7% (n=568) were adults, and 0.5% (n=12) had unknown age
- A total of 2.0% (n=45) of outbreak cases were pregnant at the time of their measles infection.
- 98.3% (n=2,174) of outbreak cases were born in or after 1970.
- Almost all infant, child and adolescent outbreak cases (96.5%, n=1,575) were unimmunized, while 68.3% (n=388) of adults were unimmunized.
- Overall, 6.7% (n=149) of outbreak cases were hospitalized and 0.5% (n=11) were admitted to the intensive care unit (ICU). 94.0% (n=140) of hospitalized cases were unimmunized, of whom 107 were infants, children and adolescents. The median length of stay among discharged hospitalized cases was three days (range: 1–54 days) and the median length of stay among ICU admissions was three days (range: 1–54 days).
- There have been seven cases of congenital measles (i.e., measles diagnosed in the first 10 days of life)
- There was one death that occurred in a congenital case of measles, who was born pre-term and had other underlying medical conditions**

### NUMBER OF MEASLES CASES BY WEEK OF RASH ONSET, 10/28/2024 – 06/24/2025



Week of rash onset	Oct 28-Nov 3	Nov 4-10	Nov 11-17	Nov 18-24	Nov 25-Dec 1	Dec 2-8	Dec 9-15	Dec 16-22	Dec 23-29	Dec 30-Jan 5	Jan 6-12	Jan 13-19	Jan 20-26	Jan 27-Feb 2	Feb 3-9	Feb 10-16	Feb 17-23	Feb 24-Mar 2	Mar 3-9	Mar 10-16	Mar 17-23	Mar 24-30	Mar 31-Apr 6	Apr 7-13	Apr 14-20	Apr 21-27	Apr 28-May 4	May 5-11	May 12-18	May 19-25	May 26-Jun 1	Jun 2-8	June 9-15	June 16-22	June 23-29**
Confirmed case	9	0	0	1	0	1	0	0	0	1	1	9	16	18	28	26	60	87	99	102	113	83	149	99	164	179	181	158	94	83	45	58	18	16	0
Probable case	0	11	5	5	2	0	3	0	0	0	0	1	2	4	6	8	13	11	4	23	15	12	13	17	23	25	28	27	9	11	14	13	6	3	0
Total cases	9	11	5	6	2	1	3	0	0	1	1	10	18	22	34	34	73	98	103	125	128	95	162	116	187	204	209	185	103	94	59	71	24	19	0



# CONTRIBUTORS

The Virtual Medical Operations Center Briefs (VMOC) were created as a service-learning project by the Yale School of Public Health faculty and graduate students in response to the 2010 Haiti Earthquake. Each year, students enrolled in Environmental Health Science Course 581—Public Health Emergencies: Disaster Planning and Response produce the VMOC Briefs. These briefs compile diverse information sources—including status reports, maps, curated news articles, and web content— into a single, easily digestible document that can be widely shared and used interactively.

Key features of this report include:

- **Comprehensive Overview:** Provides situation updates, maps, relevant news, and web resources.
- **Accessibility:** Designed for easy reading, wide distribution, and interactive use.
- **Collaboration:** The “unlocked” format enables seamless sharing, copying, and adaptation by other responders.

The students learn by doing, quickly discovering how and where to find critical information and presenting it in an easily understood manner.

**Yale MPH Student Contributors:** Our semester has come to a close. Congratulations to all our graduates who worked tirelessly on this report throughout the semester. Over the summer months, volunteers will step in to continue the reports.

**LTC (R) Joanne McGovern** – [Joanne.McGovern@yale.edu](mailto:Joanne.McGovern@yale.edu)

Lecturer, Department of Environmental Health Sciences, Yale School of Public Health

**Emily Locke** (Teaching Fellow)

**Shoa Moosavi** (Editor)